

## Spokane Pain Initiatives

DARIN NEVEN, MS, MD

---

---

---

---

---

---

---

---

### Programs

- Consistent Care Program
- Emergency Department Information Exchange
- Guidelines to Reduce Prescription Drug Abuse from the Emergency Department
- Spokane Prescription Opioid Task Force

---

---

---

---

---

---

---

---

### What is Consistent Care

- A program to reduce
  - inappropriate ED visits
  - inappropriate ED controlled substance prescribing/administration.
- Targets patients that over utilize the ED.
  - Average patient has over 20 ED visits
- Methods:
  - Coordination of care with primary care physician.
  - Individualized ED Care Guidelines accessible citywide by emergency physicians.

---

---

---

---

---

---

---

---

### The Problem

- Patients frequent multiple EDs for pain medicine.
- Concurrent mental health problems.
- Report chronic pain.
- Usually have a primary care physician.
- Have one hospital they prefer to frequent.
- Not forthcoming regarding their previous testing.
- Have Medicaid and/or Medicare.

---

---

---

---

---

---

---

---

### Core Principles of Consistent Care

- Always what is best for the patient.
- Prevent enabling non-therapeutic behavior.
- Coordinate care.
- Keep the primary care provider in control.
- Enable patient to treat themselves.
- Protect from prescription overmedication and abuse.

---

---

---

---

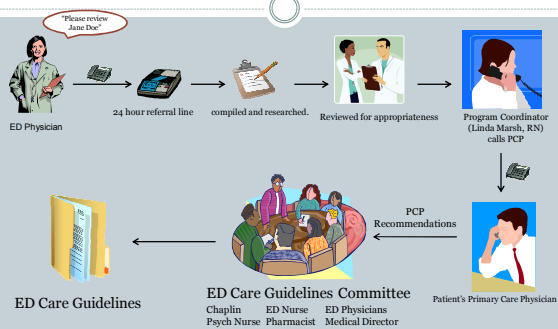
---

---

---

---

### The Process



---

---

---

---

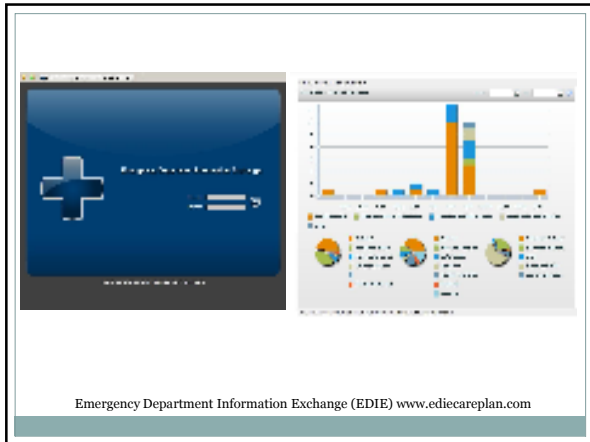
---

---

---

---





---

---

---

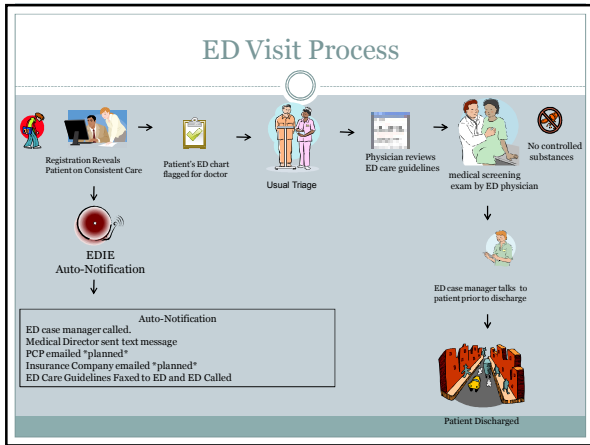
---

---

---

---

---



---

---

---

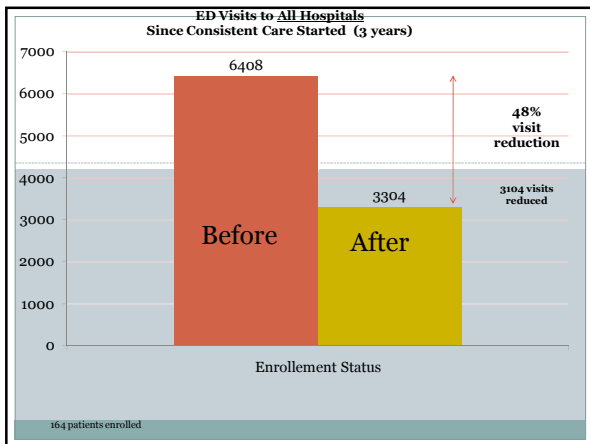
---

---

---

---

---



---

---

---

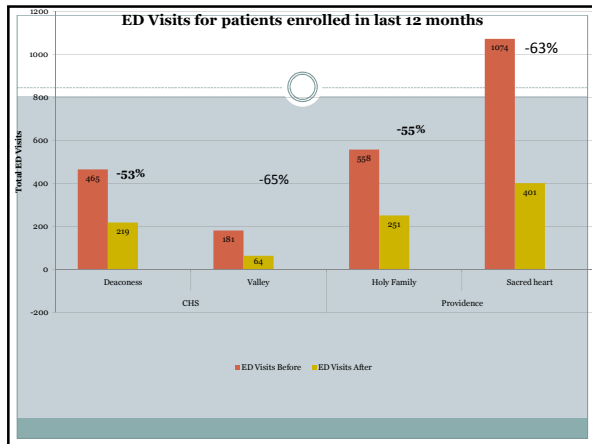
---

---

---

---

---



---

---

---

---

---

---

---

---

Please Refer Your Patients

# 474-2424

Referral Line

---

---

---

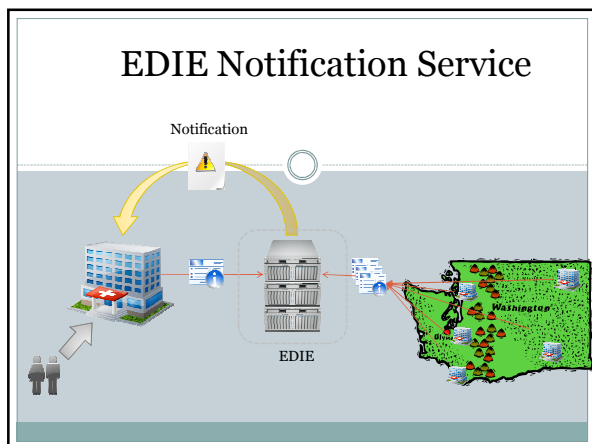
---

---

---

---

---



---

---

---

---

---

---

---

---

Guidelines to Prevent Prescription Drug Abuse from the ED

1. One prescriber, not multiple ED physician prescribers.
2. Avoid IV/IM opioids for the treatment of chronic pain in the ED.
3. Require picture ID to fill opioid prescriptions from the ED. (draft 2876)
4. Photograph ED patients without ID.

---

---

---

---

---

---

---

---

Guidelines to Prevent Prescription Drug Abuse from the ED

5. Don't replace lost or stolen prescriptions.
6. Don't give replacement doses of methadone.
7. Don't use OxyContin and Fentanyl patches for acute pain.
8. Share ED visit information with all EDs in WA.

---

---

---

---

---

---

---

---

Guidelines to Prevent Prescription Drug Abuse from the ED

9. Have pain agreements accessible to ED physician. (draft 2876)
10. Promote ED care coordination programs.
11. Keep a list of primary care and chemical dependency resources.
12. Implement screening and brief intervention programs.

---

---

---

---

---

---

---

---

Guidelines to Prevent Prescription Drug Abuse from the ED

- 13. Demerol usage is discouraged.
- 14. Contact the PMD when possible and prescribe only enough pill to last until PMD office opens.
- 15. Prescribe no more than 30 pills.
- 16. Screen for previous addiction when prescribing opioids from the ED.
- 17. EMTALA does not require the treatment of pain.

---

---

---

---

---

---

---

---

Spokane Prescription Drug Abuse Task Force

- Sponsored by the Spokane County Medical Society
- First Meeting in November 2010
- First project is to share pain contracts with Spokane emergency departments.

---

---

---

---

---

---

---

---

Spokane Prescription Drug Abuse Task Force

- SCMS Executive Committee Members – Drs. Clyde, Knox, Pope, Oakley, and Oskin
- WA State Attorney General's Office
- Spokane Regional Health District
- Kootenai Health Pharmacy Association
- Spokane Pharmacy Association
- WSU College of Pharmacy
- WSU School of Nursing
- CHAS Clinic
- WSU College of Pharmacy
- Spokane Police
- Spokane County Therapeutic Drug Court
- Spokane County Methadone Program
- Providence Physician Services
- Consistent Care Program

---

---

---

---

---

---

---

---